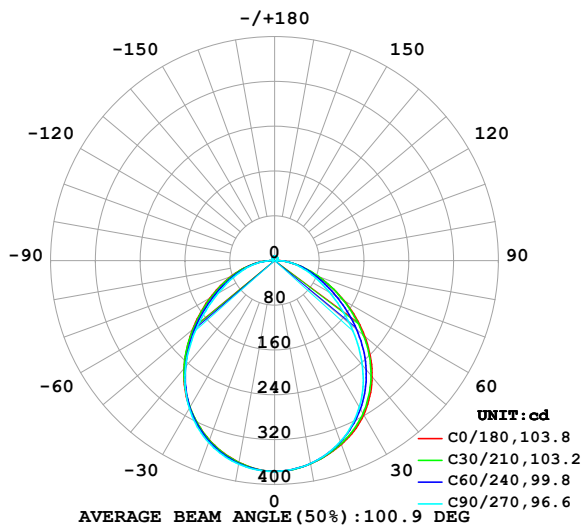


## LUMINAIRE PHOTOMETRIC TEST REPORT

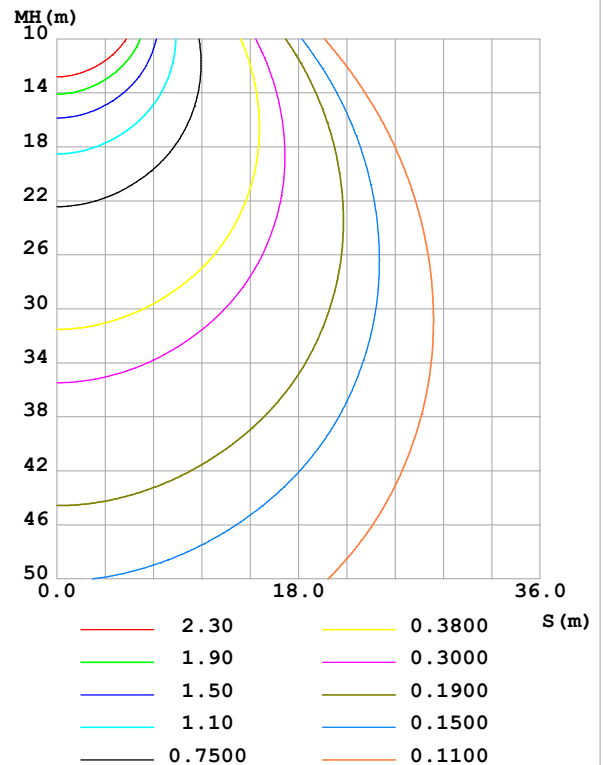
Test:U:24.00V I:0.4219A P:10.13W PF:1.000 Freq:0Hz Lamp Flux:997.519x1 lm		
NAME: SP01-24V-2835-2835-120-2700K	TYPE:	WEIGHT:
SPEC.:	DIM.: Length=1m	SERIAL No.:
MFR.: OLympia lighting	SUR.:	Shielding Angle:

DATA OF LAMP		PHOTOMETRIC DATA Eff: 98.51 lm/W			
MODEL	2835	Imax (cd)	376.6	S/MH(C0/180)	1.20
NOMINAL POWER(W)	10	LOR(%)	100.0	S/MH(C90/270)	1.21
RATED VOLTAGE(V)	24	TOTAL FLUX(lm)	997.52	$\eta$ UP,DN(C0-180)	1.7,48.3
NOMINAL FLUX(lm)	997.519	CIE CLASS	DIRECT	$\eta$ UP,DN(C180-360)	1.6,48.4
LAMPS INSIDE	1	$\eta$ up (%)	3.3	CIBSE SHR NOM	1.25
TEST VOLTAGE(V)		$\eta$ down (%)	96.7	CIBSE SHR MAX	1.35

LUMINOUS INTENSITY DISTRIBUTION DIAGRAM



C0 PLANE ISOLUX DIAGRAM (UNIT:lx)



C Range: 0 - 360DEG  
C Interval: 30.0DEG  
Test Speed: HIGH  
Temperature:25.3℃  
Operators:  
Test Date:2025-03-04

$\gamma$  Range: 0 - 180DEG  
 $\gamma$  Interval: 1.0DEG  
Test System:EVERFINE GO-2000B\_V1 SYSTEM V2.00.488  
Humidity:65.0%  
Test Distance:6.360m [K=1.0000]  
Remarks:

## ZONAL FLUX DIAGRAM

## ZONAL FLUX DIAGRAM:

$\gamma$	C0	C45	C90	C135	C180	C225	C270	C315	$\gamma$	$\Phi$ zone	$\Phi$ total	%lum, lamp
10	368.5	368.5	368.2	366.6	366.2	367.2	369.2	369.3	0- 10	35.53	35.53	3.56,3.56
20	349.4	346.2	343.9	341.5	341.0	342.2	345.5	347.6	10- 20	100.9	136.5	13.7,13.7
30	318.2	311.1	302.7	301.9	303.3	302.6	304.9	313.4	20- 30	150.9	287.3	28.8,28.8
40	271.0	261.4	243.9	248.7	252.0	249.8	247.3	264.5	30- 40	176.8	464.1	46.5,46.5
50	210.3	199.2	175.0	185.5	191.1	187.3	178.4	203.0	40- 50	172.9	637.0	63.9,63.9
60	143.5	134.5	113.0	125.6	133.1	127.3	116.4	138.3	50- 60	143.3	780.3	78.2,78.2
70	82.59	79.64	68.13	76.63	82.84	77.90	70.65	82.58	60- 70	101.8	882.1	88.4,88.4
80	36.92	37.56	34.85	37.91	39.58	38.58	36.53	39.80	70- 80	60.52	942.6	94.5,94.5
90	4.151	4.054	3.651	4.336	4.596	4.579	3.961	4.370	80- 90	21.55	964.1	96.7,96.7
100	3.893	4.038	4.203	4.183	3.540	3.838	4.069	3.741	90-100	4.104	968.3	97.1,97.1
110	4.590	4.715	4.853	4.881	4.145	4.460	4.670	4.336	100-110	4.508	972.8	97.5,97.5
120	5.269	5.361	5.439	5.528	4.764	5.087	5.236	4.908	110-120	4.860	977.6	98,98
130	5.888	5.960	6.020	6.114	5.357	5.650	5.756	5.470	120-130	4.929	982.5	98.5,98.5
140	6.436	6.482	6.523	6.636	5.927	6.146	6.227	5.992	130-140	4.677	987.2	99,99
150	6.951	6.951	7.017	7.115	6.526	6.671	6.712	6.525	140-150	4.110	991.3	99.4,99.4
160	7.475	7.452	7.531	7.588	7.183	7.248	7.258	7.121	150-160	3.269	994.6	99.7,99.7
170	7.936	7.873	7.955	7.994	7.796	7.787	7.825	7.744	160-170	2.152	996.8	99.9,99.9
180	8.133	8.111	8.169	8.166	8.135	8.102	8.163	8.157	170-180	0.7616	997.5	100,100
DEG	LUMINOUS INTENSITY:cd									UNIT:lm		

Conical surface Flux(90deg): 552.91 lm

%lum = 55.4%

%lamp = 55.4%

Conical surface Flux(130deg): 836.55 lm

%lum = 83.9%

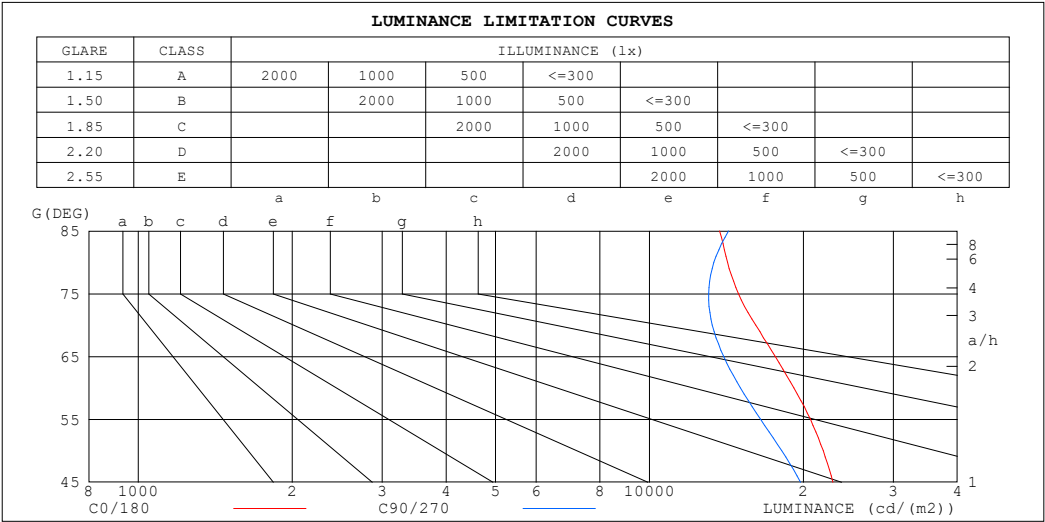
%lamp = 83.9%

C Range: 0 - 360DEG  
 C Interval: 30.0DEG  
 Test Speed: HIGH  
 Temperature:25.3℃  
 Operators:  
 Test Date:2025-03-04

$\gamma$  Range: 0 - 180DEG  
 $\gamma$  Interval: 1.0DEG  
 Test System:EVERFINE GO-2000B\_V1 SYSTEM V2.00.488  
 Humidity:65.0%  
 Test Distance:6.360m [K=1.0000]  
 Remarks:

LUMINANCE LIMITATION CURVES

Test:U:24.00V I:0.4219A P:10.13W PF:1.000 Freq:0Hz Lamp Flux:997.519x1 lm		
NAME: SP01-24V-2835-2835-120-2700K	TYPE:	WEIGHT:
SPEC.:	DIM.: Length=1m	SERIAL No.:
MFR.: OLympia lighting	SUR.:	Shielding Angle:



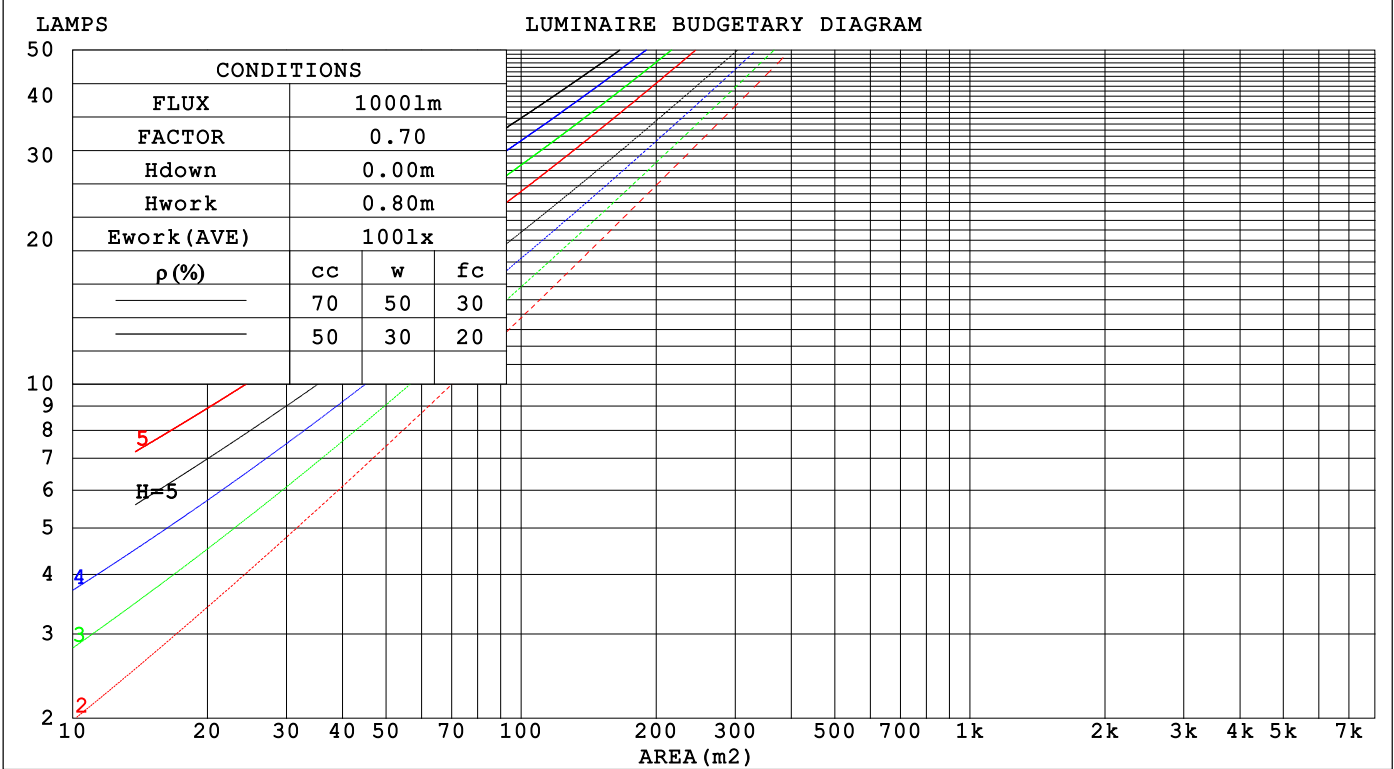
LUMINANCE cd/(m2)		
G (DEG)	C0/180	C90/270
85	13718	14278
80	14207	13370
75	14932	13065
70	16134	13269
65	17619	13971
60	19170	15057
55	20639	16487
50	21863	18140
45	22848	19749

C Range: 0 - 360DEG	γ Range: 0 - 180DEG
C Interval: 30.0DEG	γ Interval: 1.0DEG
Test Speed: HIGH	Test System:EVERFINE GO-2000B_V1 SYSTEM V2.00.488
Temperature:25.3℃	Humidity:65.0%
Operators:	Test Distance:6.360m [K=1.0000]
Test Date:2025-03-04	Remarks:

CU AND LUMINAIRE BUDGETARY ESTIMATE DIAGRAM

Test:U:24.00V I:0.4219A P:10.13W PF:1.000 Freq:0Hz		
Lamp Flux:997.519x1 lm		
NAME: SP01-24V-2835-2835-120-2700K	TYPE:	WEIGHT:
SPEC.:	DIM.: Length=1m	SERIAL No.:
MFR.: OLYMPIA lighting	SUR.:	Shielding Angle:

pcc	80%			70%			50%			30%			10%			0
p <sub>w</sub>	50%	30%	10%	50%	30%	10%	50%	30%	10%	50%	30%	10%	50%	30%	10%	0
p <sub>fc</sub>	20%			20%			20%			20%			20%			0
RCR	RCR:Room Cavity Ratio															



C Range: 0 - 360DEG  
C Interval: 30.0DEG  
Test Speed: HIGH  
Temperature:25.3℃  
Operators:  
Test Date:2025-03-04

γ Range: 0 - 180DEG  
γ Interval: 1.0DEG  
Test System:EVERFINE GO-2000B\_V1 SYSTEM V2.00.488  
Humidity:65.0%  
Test Distance:6.360m [K=1.0000]  
Remarks:

## WEC AND CCEC

Test:U:24.00V I:0.4219A P:10.13W PF:1.000 Freq:0Hz Lamp Flux:997.519x1 lm		
NAME: SP01-24V-2835-2835-120-2700K	TYPE:	WEIGHT:
SPEC.:	DIM.: Length=1m	SERIAL No.:
MFR.: OLympia lighting	SUR.:	Shielding Angle:

pcc	80%			70%			50%			30%			10%			0														
pw	50%	30%	10%	50%	30%	10%	50%	30%	10%	50%	30%	10%	50%	30%	10%	0														
pfc	20%			20%			20%			20%			20%			0														
RCR	RCR:Room Cavity Ratio															Wall Exitance Coefficients(WEC)														
0.0																														
1.0	.301	.171	.054	.293	.167	.053	.278	.159	.051	.264	.152	.049	.251	.146	.047															
2.0	.282	.154	.047	.275	.151	.047	.261	.145	.045	.249	.140	.044	.237	.134	.042															
3.0	.261	.139	.042	.254	.136	.041	.242	.131	.040	.231	.127	.039	.221	.122	.038															
4.0	.241	.125	.037	.235	.123	.036	.225	.119	.036	.215	.115	.035	.206	.112	.034															
5.0	.223	.114	.033	.218	.112	.033	.209	.109	.032	.200	.105	.031	.192	.102	.031															
6.0	.207	.104	.030	.203	.102	.029	.194	.100	.029	.186	.097	.028	.179	.094	.028															
7.0	.193	.096	.027	.189	.094	.027	.182	.092	.026	.175	.089	.026	.168	.087	.026															
8.0	.181	.088	.025	.177	.087	.025	.170	.085	.024	.164	.083	.024	.158	.081	.024															
9.0	.170	.082	.023	.167	.081	.023	.160	.079	.022	.154	.077	.022	.149	.076	.022															
10.0	.160	.077	.021	.157	.076	.021	.151	.074	.021	.146	.072	.021	.141	.071	.020															

pcc	80%			70%			50%			30%			10%			0
pw	50%	30%	10%	50%	30%	10%	50%	30%	10%	50%	30%	10%	50%	30%	10%	0
pfc	20%			20%			20%			20%			20%			0
RCR	RCR:Room Cavity Ratio						Ceiling Cavity Exitance Coefficients (CCEC)									
0.0	.216	.216	.216	.185	.185	.185	.126	.126	.126	.072	.072	.072	.023	.023	.023	
1.0	.205	.182	.161	.176	.156	.138	.120	.107	.096	.069	.062	.056	.022	.020	.018	
2.0	.197	.158	.125	.169	.136	.108	.115	.094	.075	.067	.055	.044	.021	.018	.014	
3.0	.189	.140	.102	.162	.121	.088	.111	.084	.062	.064	.049	.036	.021	.016	.012	
4.0	.181	.127	.086	.155	.110	.074	.107	.076	.052	.062	.045	.031	.020	.015	.010	
5.0	.173	.117	.074	.149	.101	.065	.103	.070	.046	.059	.041	.027	.019	.013	.009	
6.0	.166	.108	.066	.143	.094	.058	.099	.066	.041	.057	.039	.024	.018	.013	.008	
7.0	.160	.101	.060	.137	.088	.053	.095	.062	.037	.055	.036	.022	.018	.012	.007	
8.0	.153	.095	.056	.132	.083	.049	.091	.058	.034	.053	.034	.021	.017	.011	.007	
9.0	.147	.091	.052	.127	.079	.045	.088	.055	.032	.051	.033	.019	.017	.011	.006	
10.0	.142	.086	.049	.122	.075	.043	.085	.053	.031	.050	.031	.018	.016	.010	.006	

C Range: 0 - 360DEG  
C Interval: 30.0DEG  
Test Speed: HIGH  
Temperature:25.3℃  
Operators:  
Test Date:2025-03-04

γ Range: 0 - 180DEG  
γ Interval: 1.0DEG  
Test System:EVERFINE GO-2000B\_V1 SYSTEM V2.00.488  
Humidity:65.0%  
Test Distance:6.360m [K=1.0000]  
Remarks:

UGR(Unified Glare Rating) Table

Test:U:24.00V I:0.4219A P:10.13W PF:1.000 Freq:0Hz Lamp Flux:997.519x1 lm											
NAME: SP01-24V-2835-2835-120-2700K						TYPE:		WEIGHT:			
SPEC.:						DIM.: Length=1m		SERIAL No.:			
MFR.: OLympia lighting						SUR.:		Shielding Angle:			
ceiling/cavity	0.7	0.7	0.5	0.5	0.3	0.7	0.7	0.5	0.5	0.3	
walls	0.5	0.3	0.5	0.3	0.3	0.5	0.3	0.5	0.3	0.3	
working plane	0.2	0.2	0.2	0.2	0.2	0.2	0.2	0.2	0.2	0.2	
Room dimensions		Viewed crosswise					Viewed endwise				
x = 2H y = 2H	2H	22.5	24.0	22.8	24.2	24.5	21.6	23.1	21.9	23.3	23.6
	3H	23.8	25.1	24.1	25.4	25.7	22.8	24.1	23.2	24.4	24.7
	4H	24.3	25.6	24.7	25.9	26.2	23.3	24.6	23.7	24.9	25.2
	6H	24.7	25.9	25.1	26.2	26.6	23.8	25.0	24.2	25.3	25.7
	8H	24.9	26.0	25.3	26.3	26.7	24.0	25.1	24.4	25.5	25.8
	12H	25.0	26.1	25.4	26.4	26.8	24.2	25.3	24.6	25.6	26.0
4H	2H	23.0	24.2	23.3	24.5	24.8	22.3	23.5	22.6	23.8	24.1
	3H	24.4	25.5	24.8	25.9	26.3	23.6	24.7	24.0	25.1	25.5
	4H	25.1	26.1	25.5	26.5	26.9	24.3	25.3	24.7	25.7	26.1
	6H	25.6	26.5	26.1	26.9	27.4	24.9	25.8	25.4	26.2	26.6
	8H	25.9	26.7	26.3	27.1	27.6	25.2	26.0	25.6	26.4	26.9
	12H	26.0	26.8	26.5	27.2	27.7	25.4	26.2	25.9	26.6	27.1
8H	4H	25.3	26.1	25.8	26.6	27.0	24.6	25.4	25.1	25.9	26.3
	6H	26.0	26.7	26.5	27.2	27.7	25.4	26.1	25.9	26.6	27.1
	8H	26.3	27.0	26.9	27.4	28.0	25.8	26.4	26.3	26.9	27.4
	12H	26.6	27.1	27.1	27.6	28.2	26.1	26.6	26.6	27.1	27.7
12H	4H	25.3	26.1	25.8	26.5	27.0	24.6	25.4	25.1	25.8	26.3
	6H	26.1	26.7	26.6	27.2	27.7	25.5	26.1	26.0	26.6	27.1
	8H	26.5	27.0	27.0	27.5	28.0	25.9	26.4	26.5	26.9	27.5
Variations with the observer position at spacings(CIE Pub.117):											
S = 1.0H		+ 0.2 / - 0.2					+ 0.2 / - 0.3				
1.5H		+ 0.2 / - 0.3					+ 0.2 / - 0.3				
2.0H		+ 0.3 / - 0.3					+ 0.2 / - 0.5				

CIE Pub.117, 997.5 lm Total Lamp Luminous Flux Correct (8log(F/F0) = -0.0)  
Area: 0.015 m2

C Range: 0 - 360DEG  
C Interval: 30.0DEG  
Test Speed: HIGH  
Temperature:25.3℃  
Operators:  
Test Date:2025-03-04

γ Range: 0 - 180DEG  
γ Interval: 1.0DEG  
Test System:EVERFINE GO-2000B\_V1 SYSTEM V2.00.488  
Humidity:65.0%  
Test Distance:6.360m [K=1.0000]  
Remarks:

## UTILIZATION FACTORS TABLE

Test:U:24.00V I:0.4219A P:10.13W PF:1.000 Freq:0Hz Lamp Flux:997.519x1 lm		
NAME: SP01-24V-2835-2835-120-2700K	TYPE:	WEIGHT:
SPEC.:	DIM.: Length=1m	SERIAL No.:
MFR.: OLympia lighting	SUR.:	Shielding Angle:

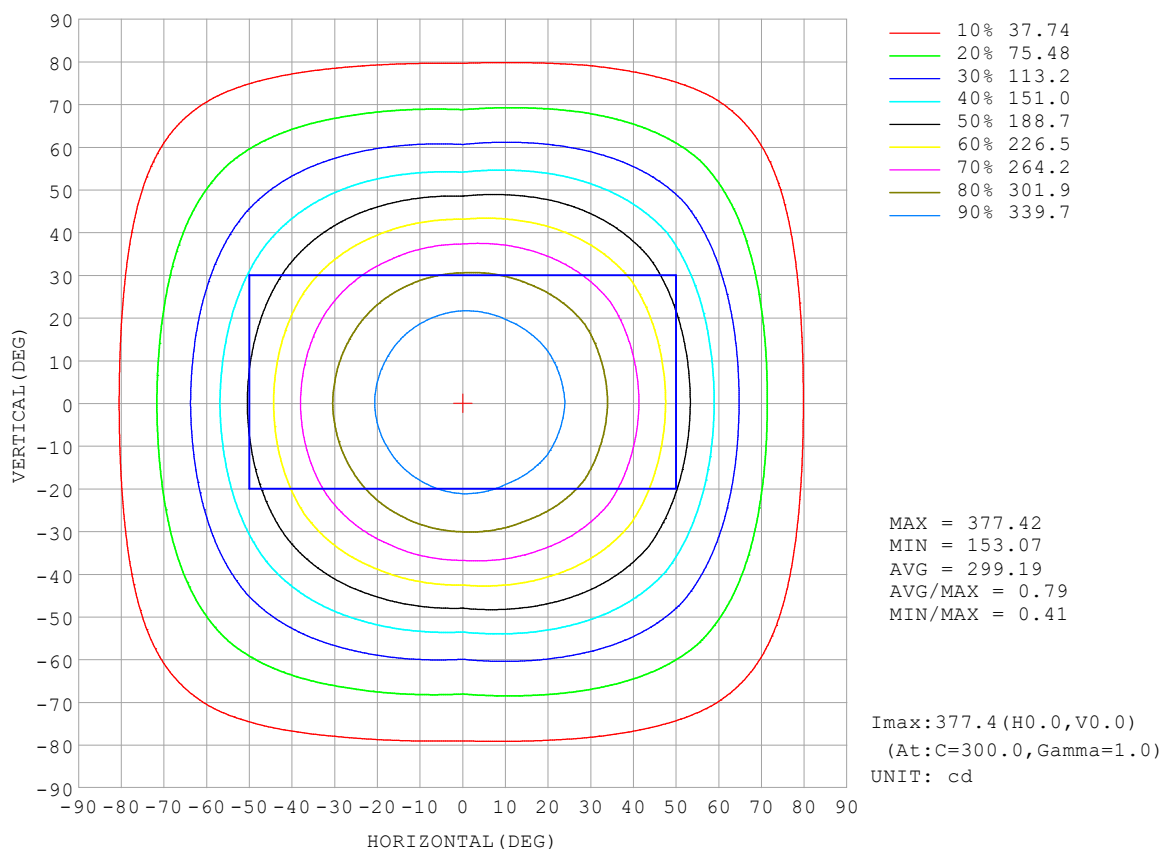
REFLECTANCE										
Ceiling	0.8	0.8	0.8	0.7	0.7	0.7	0.5	0.5	0.5	0
Walls	0.7	0.5	0.3	0.7	0.5	0.3	0.7	0.5	0.3	0
Working plane	0.2	0.2	0.2	0.2	0.2	0.2	0.2	0.2	0.2	0
ROOM INDEX	UTILIZATION FACTORS (PERCENT) $k(RI) \times RCR = 5$									
$k = 0.60$	59	47	41	58	47	40	56	46	40	34
0.80	68	57	50	67	57	50	65	56	49	42
1.00	77	66	59	75	65	58	73	66	58	51
1.25	84	73	66	82	73	66	79	71	65	57
1.50	88	79	72	87	78	71	83	76	70	62
2.00	95	87	80	93	85	79	89	83	78	69
2.50	99	91	85	96	89	84	92	86	82	73
3.00	102	95	90	99	93	88	95	90	86	77
4.00	106	100	95	103	98	94	98	94	91	81
5.00	108	103	99	105	101	97	100	97	94	84
ROOM INDEX	UF (total)									Direct
According to DIN EN 13032-2 2004			Suspended					SHRNOM = 1.25		

C Range: 0 - 360DEG  
 C Interval: 30.0DEG  
 Test Speed: HIGH  
 Temperature: 25.3°C  
 Operators:  
 Test Date: 2025-03-04

γ Range: 0 - 180DEG  
 γ Interval: 1.0DEG  
 Test System: EVERFINE GO-2000B\_V1 SYSTEM V2.00.488  
 Humidity: 65.0%  
 Test Distance: 6.360m [K=1.0000]  
 Remarks:

## ISOCANDELA DIAGRAM

Test:U:24.00V I:0.4219A P:10.13W PF:1.000 Freq:0Hz Lamp Flux:997.519x1 lm		
NAME: SP01-24V-2835-2835-120-2700K	TYPE:	WEIGHT:
SPEC.:	DIM.: Length=1m	SERIAL No.:
MFR.: OLympia lighting	SUR.:	Shielding Angle:



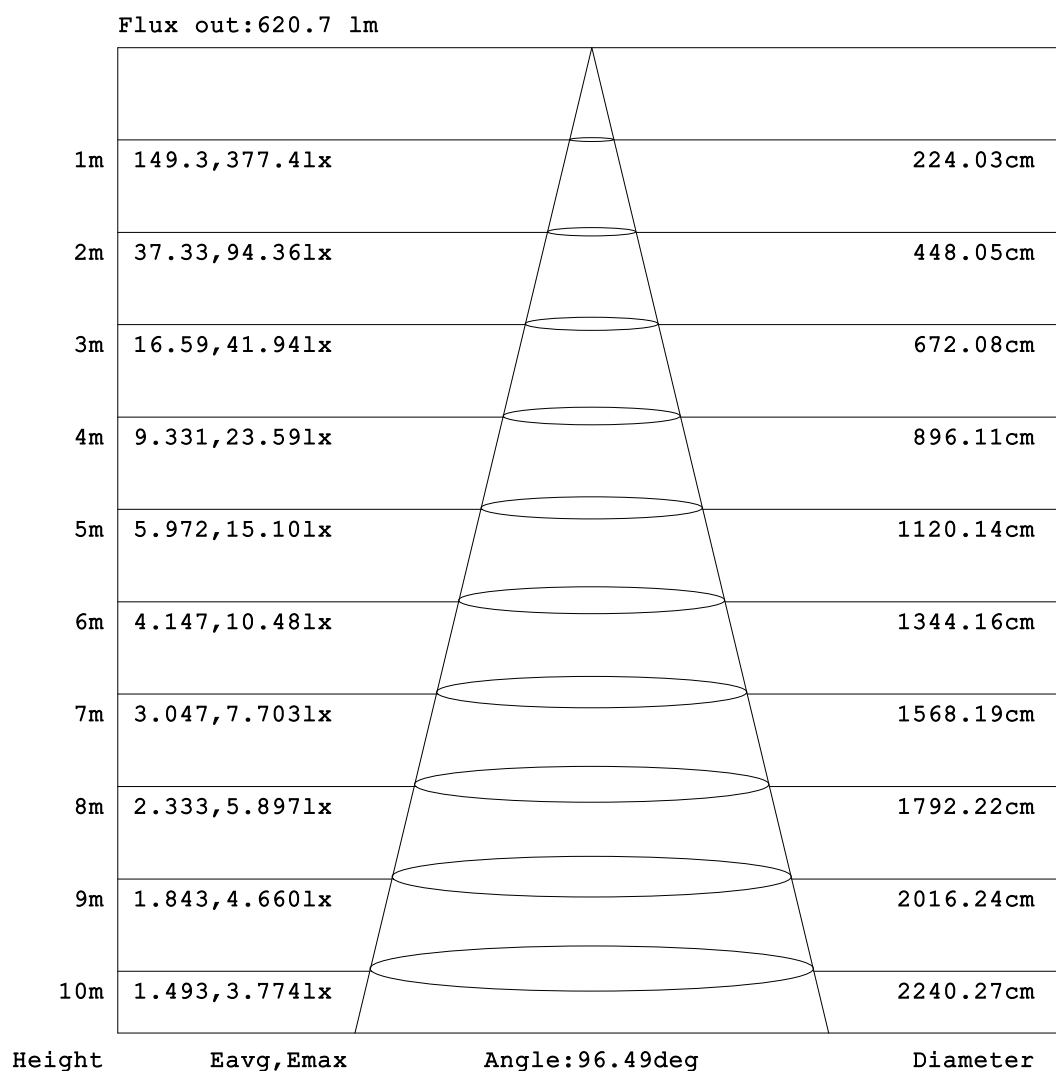
C Range: 0 - 360DEG  
C Interval: 30.0DEG  
Test Speed: HIGH  
Temperature:25.3℃  
Operators:  
Test Date:2025-03-04

γ Range: 0 - 180DEG  
γ Interval: 1.0DEG  
Test System:EVERFINE GO-2000B\_V1 SYSTEM V2.00.488  
Humidity:65.0%  
Test Distance:6.360m [K=1.0000]  
Remarks:



## AAI Figure

Test:U:24.00V I:0.4219A P:10.13W PF:1.000 Freq:0Hz Lamp Flux:997.519x1 lm		
NAME: SP01-24V-2835-2835-120-2700K	TYPE:	WEIGHT:
SPEC.:	DIM.: Length=1m	SERIAL No.:
MFR.: OLympia lighting	SUR.:	Shielding Angle:



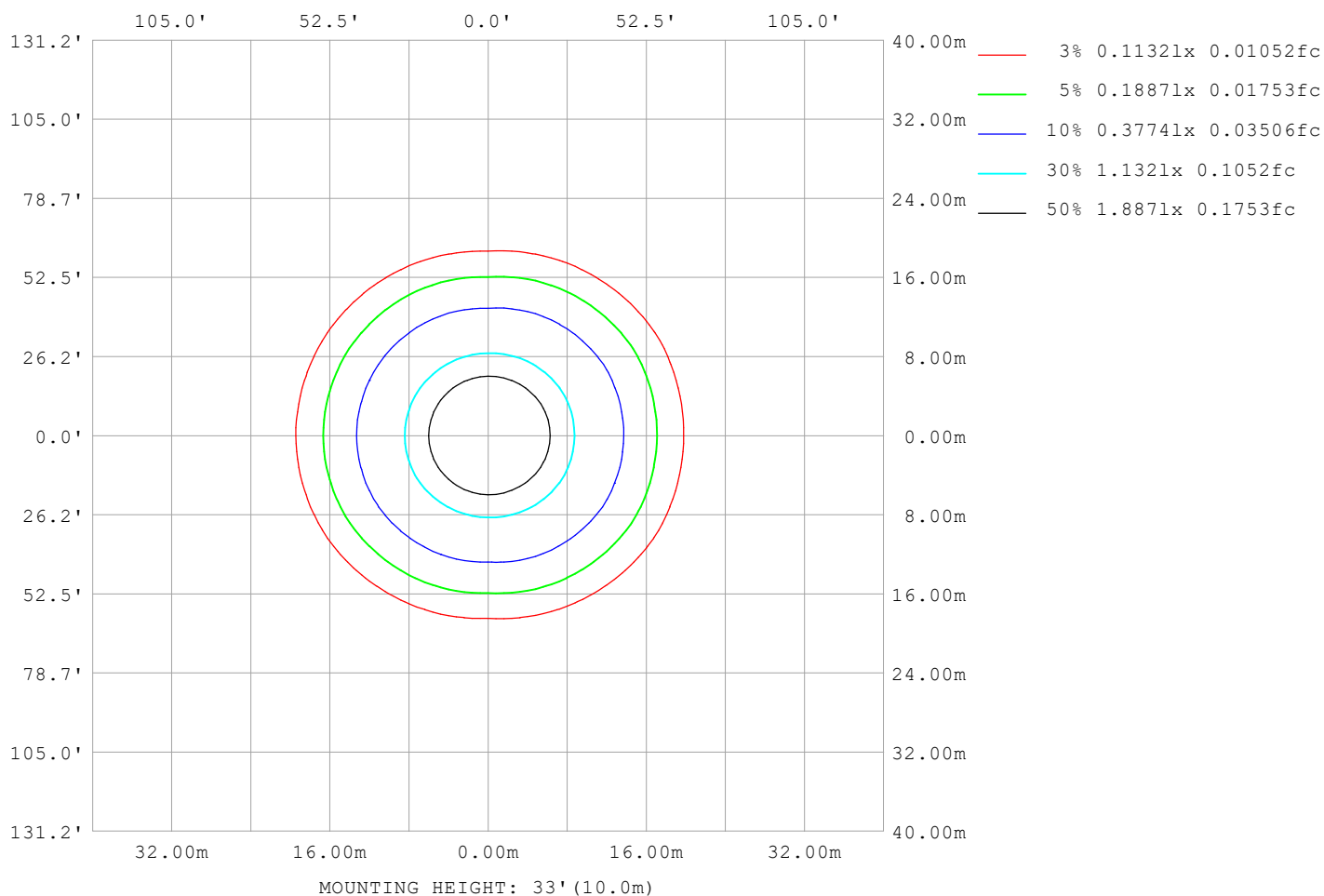
Note: The Curves indicate the illuminated area and the average illumination when the luminaire is at different distance.

C Range: 0 - 360DEG  
C Interval: 30.0DEG  
Test Speed: HIGH  
Temperature: 25.3℃  
Operators:  
Test Date: 2025-03-04

γ Range: 0 - 180DEG  
γ Interval: 1.0DEG  
Test System: EVERFINE GO-2000B\_V1 SYSTEM V2.00.488  
Humidity: 65.0%  
Test Distance: 6.360m [K=1.0000]  
Remarks:

## ISOLUX DIAGRAM

Test:U:24.00V I:0.4219A P:10.13W PF:1.000 Freq:0Hz Lamp Flux:997.519x1 lm		
NAME: SP01-24V-2835-2835-120-2700K	TYPE:	WEIGHT:
SPEC.:	DIM.: Length=1m	SERIAL No.:
MFR.: OLympia lighting	SUR.:	Shielding Angle:



C Range: 0 - 360DEG  
C Interval: 30.0DEG  
Test Speed: HIGH  
Temperature: 25.3°C  
Operators:  
Test Date: 2025-03-04

γ Range: 0 - 180DEG  
γ Interval: 1.0DEG  
Test System: EVERFINE GO-2000B\_V1 SYSTEM V2.00.488  
Humidity: 65.0%  
Test Distance: 6.360m [K=1.0000]  
Remarks:

## LED Avg.L Report

Test:U:24.00V I:0.4219A P:10.13W PF:1.000 Freq:0Hz Lamp Flux:997.519x1 lm		
NAME: SP01-24V-2835-2835-120-2700K	TYPE:	WEIGHT:
SPEC.:	DIM.: Length=1m	SERIAL No.:
MFR.: OLympia lighting	SUR.:	Shielding Angle:

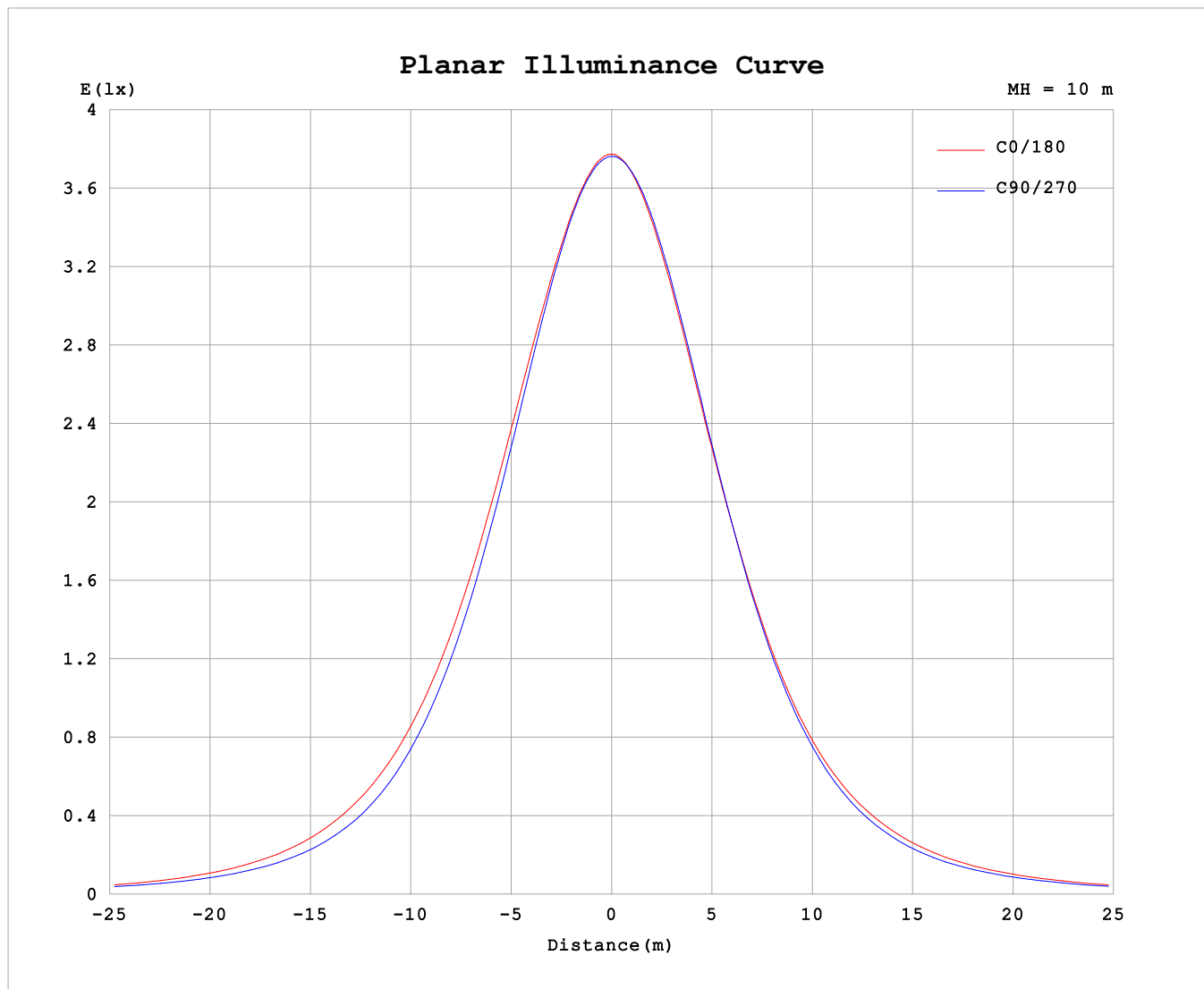
AvgL	cd/m2
L_0~180 (65) av	17208
L_0~180 (75) av	15240
L_0~180 (85) av	14326
L_90~270 (65) av	14219
L_90~270 (75) av	13331
L_90~270 (85) av	14833
L_45 (65) av	16433
L_45 (75) av	14961
L_45 (85) av	15184

Standard: GB/T 29293-2012

C Range: 0 - 360DEG  
C Interval: 30.0DEG  
Test Speed: HIGH  
Temperature:25.3℃  
Operators:  
Test Date:2025-03-04

γ Range: 0 - 180DEG  
γ Interval: 1.0DEG  
Test System:EVERFINE GO-2000B\_V1 SYSTEM V2.00.488  
Humidity:65.0%  
Test Distance:6.360m [K=1.0000]  
Remarks:

## Planar Illuminance Curve



C Range: 0 - 360DEG  
C Interval: 30.0DEG  
Test Speed: HIGH  
Temperature: 25.3 °C  
Operators:  
Test Date: 2025-03-04

$\gamma$  Range: 0 - 180DEG  
 $\gamma$  Interval: 1.0DEG  
Test System: EVERFINE GO-2000B\_V1 SYSTEM V2.00.488  
Humidity: 65.0%  
Test Distance: 6.360m [K=1.0000]  
Remarks:

## LUMINOUS DISTRIBUTION INTENSITY DATA

Test:U:24.00V I:0.4219A P:10.13W PF:1.000 Freq:0Hz Lamp Flux:997.519x1 lm		
NAME: SP01-24V-2835-2835-120-2700K	TYPE:	WEIGHT:
SPEC.:	DIM.: Length=1m	SERIAL No.:
MFR.: OLYMPIA lighting	SUR.:	Shielding Angle:

Table--1

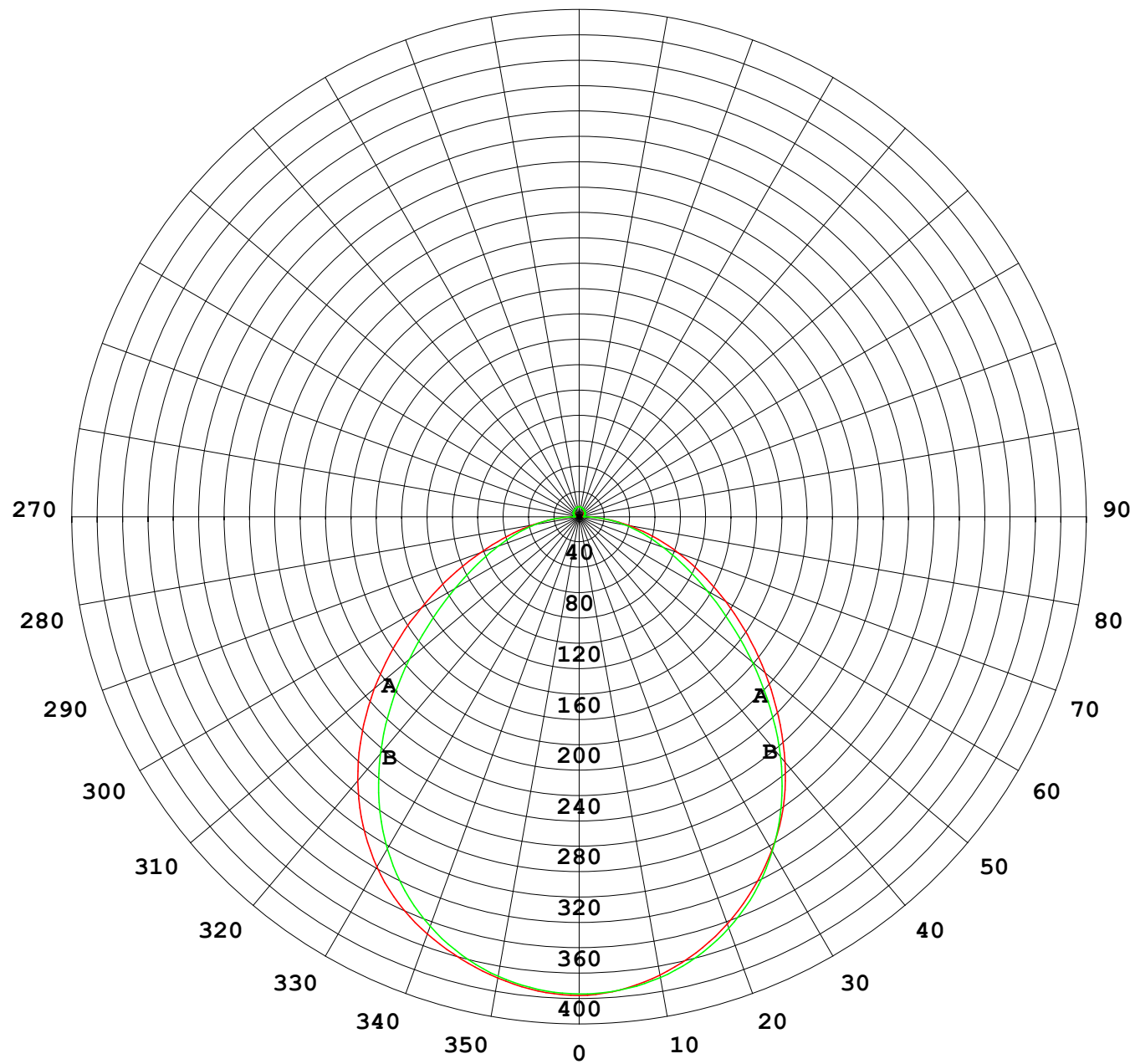
UNIT: cd

C (DEG) γ (DEG)	0	30	60	90	120	150	180	210	240	270	300	330							
0	377	377	377	377	377	377	377	377	377	377	377	377							
5	374	375	374	374	374	374	374	374	374	375	375	375							
10	369	369	368	368	367	366	366	367	368	369	369	369							
15	360	360	358	358	356	355	355	356	357	359	360	360							
20	349	348	344	344	342	341	341	341	343	345	346	349							
25	336	334	327	326	324	323	323	323	325	327	330	335							
30	318	316	306	303	301	302	303	302	303	305	309	317							
35	296	294	282	275	275	279	280	279	277	278	286	296							
40	271	268	255	244	245	252	252	252	248	247	259	271							
45	242	239	224	210	213	221	222	222	216	213	228	242							
50	210	207	191	175	181	190	191	190	185	178	196	210							
55	177	174	158	142	150	159	161	159	153	145	163	177							
60	143	142	127	113	121	130	133	131	124	116	131	145							
65	111	111	99.6	88.6	95.1	104	107	104	97.7	91.6	103	114							
70	82.6	83.3	75.9	68.1	72.9	80.3	82.8	80.8	75.0	70.7	79.1	86.0							
75	57.8	58.9	55.6	50.8	53.9	59.4	60.5	59.6	55.5	52.8	58.4	61.1							
80	36.9	38.0	37.1	34.9	36.5	39.4	39.6	39.4	37.8	36.5	39.7	39.9							
85	17.9	18.8	19.3	18.7	18.9	19.7	19.6	19.5	19.9	20.1	21.7	20.4							
90	4.15	4.18	3.93	3.65	4.01	4.66	4.60	4.66	4.50	3.96	4.34	4.40							
95	3.58	3.68	3.75	3.91	3.88	3.85	3.36	3.60	3.86	3.77	3.66	3.32							
100	3.89	4.00	4.08	4.20	4.20	4.16	3.54	3.68	4.00	4.07	3.89	3.59							
105	4.24	4.34	4.41	4.52	4.55	4.52	3.84	3.96	4.32	4.37	4.20	3.88							
110	4.59	4.68	4.75	4.85	4.89	4.87	4.14	4.27	4.65	4.67	4.49	4.18							
115	4.93	5.01	5.07	5.15	5.21	5.21	4.46	4.60	4.97	4.96	4.77	4.48							
120	5.27	5.34	5.38	5.44	5.52	5.53	4.76	4.90	5.28	5.24	5.04	4.78							
125	5.59	5.66	5.68	5.74	5.82	5.85	5.06	5.20	5.55	5.50	5.32	5.07							
130	5.89	5.96	5.96	6.02	6.10	6.13	5.36	5.49	5.81	5.76	5.59	5.35							
135	6.17	6.24	6.22	6.27	6.36	6.40	5.65	5.76	6.04	6.00	5.85	5.61							
140	6.44	6.51	6.46	6.52	6.62	6.65	5.93	6.03	6.27	6.23	6.10	5.88							
145	6.69	6.74	6.69	6.77	6.87	6.89	6.21	6.30	6.50	6.45	6.35	6.17							
150	6.95	6.98	6.92	7.02	7.11	7.12	6.53	6.59	6.75	6.71	6.60	6.45							
155	7.21	7.23	7.17	7.28	7.35	7.35	6.85	6.89	7.02	6.97	6.88	6.76							
160	7.48	7.49	7.42	7.53	7.57	7.61	7.18	7.20	7.30	7.26	7.17	7.07							
165	7.72	7.71	7.66	7.76	7.78	7.84	7.50	7.49	7.58	7.56	7.49	7.39							
170	7.94	7.89	7.85	7.96	7.96	8.03	7.80	7.74	7.83	7.82	7.78	7.71							
175	8.07	8.04	8.01	8.11	8.10	8.16	8.01	7.95	8.03	8.03	8.02	7.94							
180	8.13	8.11	8.11	8.17	8.17	8.16	8.14	8.10	8.11	8.16	8.17	8.15							

C Range: 0 - 360DEG  
C Interval: 30.0DEG  
Test Speed: HIGH  
Temperature:25.3℃  
Operators:  
Test Date:2025-03-04

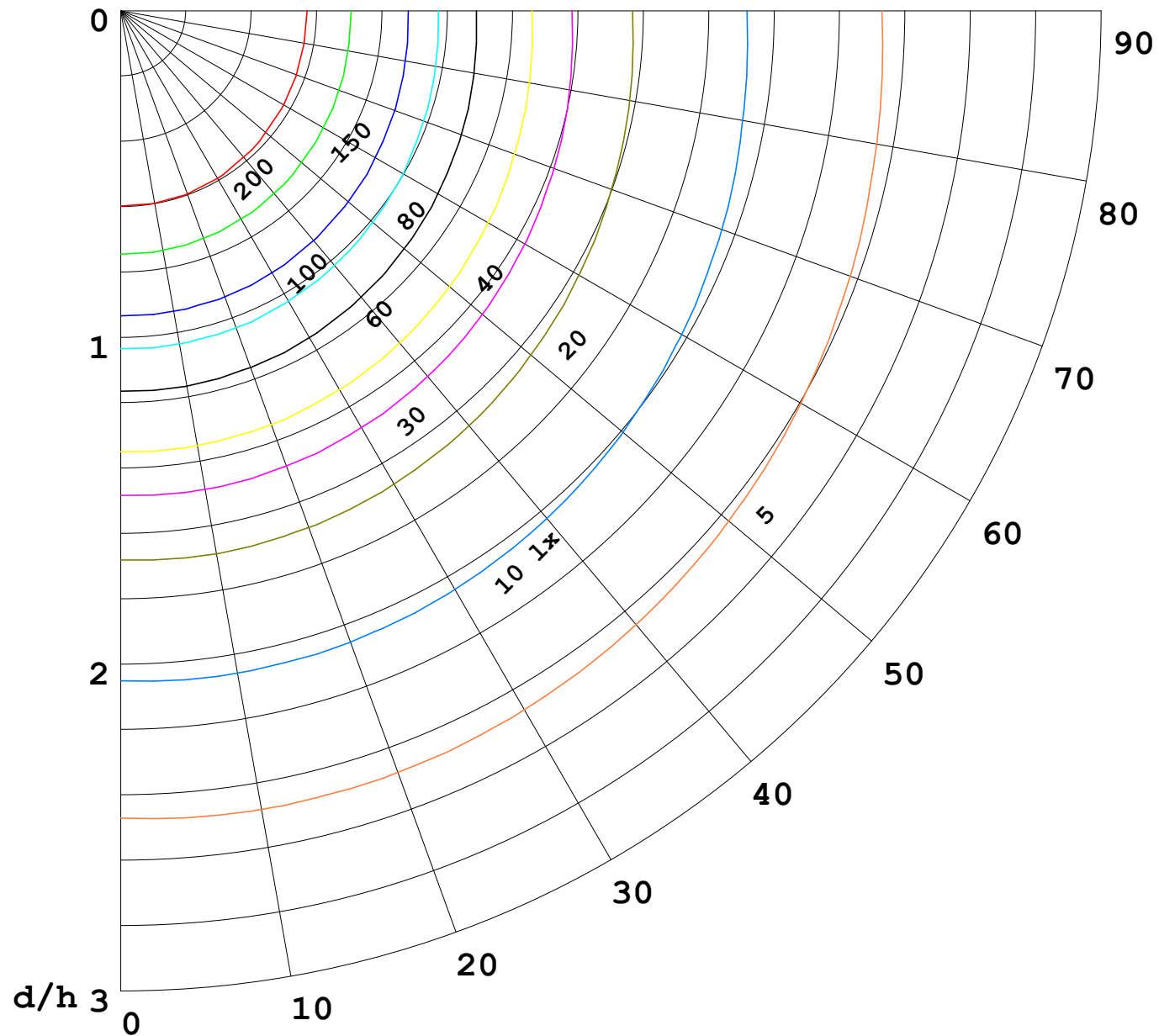
γ Range: 0 - 180DEG  
γ Interval: 1.0DEG  
Test System:EVERFINE GO-2000B\_V1 SYSTEM V2.00.488  
Humidity:65.0%  
Test Distance:6.360m [K=1.0000]  
Remarks:

I (cd)



1000 lm

$\kappa = 1$



F = 1000 lm  
 K = 0.7  
 Hcc = 0.8 m  
 Hfc = 0.0 m  
 Eave = 100 lx

	Pcc	Pw	Pfc
—————	70	50	30
—————	50	30	20

